

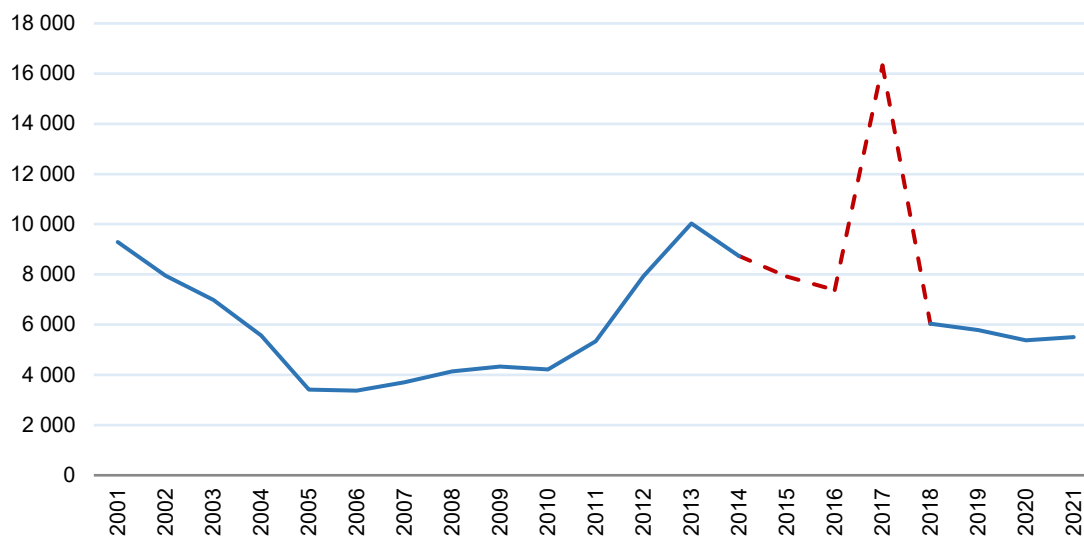
## Small increase in the number of Portuguese entries in Germany in 2021

2022-05-03

In 2021, 5,510 Portuguese entered Germany, according to data from the Statistisches Bundesamt Deutschland. The German agency accounted for a total of 907,220 foreigners entering Germany, with the Portuguese accounting for 0.6% of this total. +

After three successive years of decrease in the number of Portuguese arrivals in Germany, in 2021 the fall is interrupted, with the entry of 5,510 Portuguese, which corresponded to an increase of 2.4% compared to 2020. However, in the German case, it is impossible, strictly speaking, to specify the variations that occurred between 2015 and 2018. According to the German Central Register of Foreigners itself, of the 16,325 entries registered in 2017, only 7,095 took place that year. The remaining 9,203 entries took place in previous years but were only registered in 2017. The values of this indicator for the years 2014 and 2016 are therefore undercounted, those for 2017 are inflated and neither the growth recorded between 2016 and 2017 nor the decrease between 2017 and 2018 are real.

**Portuguese inflows into Germany, 2001-2021**



**Source** Graph by Observatório da Emigração [Emigration Observatory], data by Statistisches Bundesamt Deutschland.

**Link** <https://www.destatis.de/EN/Homepage.html>

[by Inês Vidigal]

**Cite as** Vidigal, Inês (2022), "Small increase in the number of Portuguese entries in Germany in 2021", *Observatório da Emigração*. <http://observatorioemigracao.pt/np4EN/8592.html>